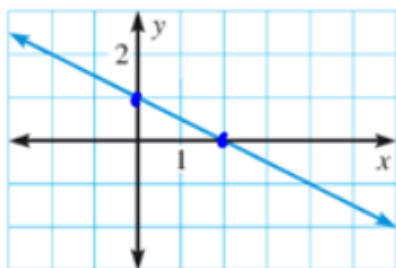
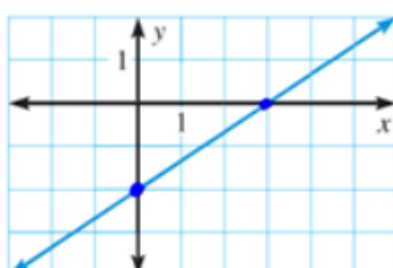


Identify the  $x$ -intercept and the  $y$ -intercept of the graph

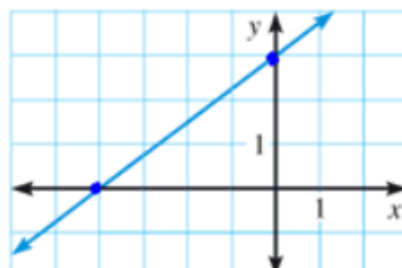
1.

 $x$ -intercept = 2 $y$ -intercept = 1

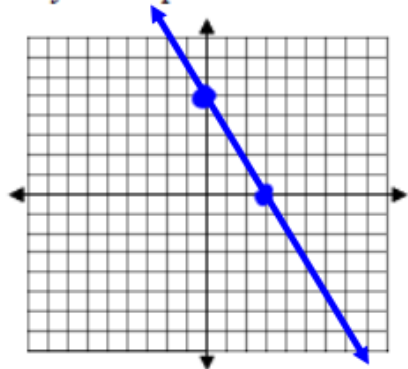
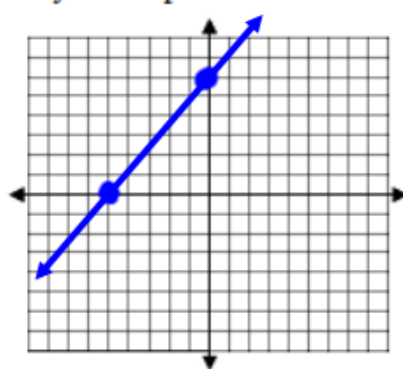
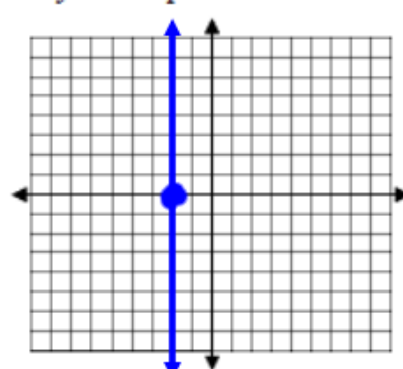
2.

 $x$ -intercept = 3 $y$ -intercept = -2

3.

 $x$ -intercept = -4 $y$ -intercept = 3

## Draw the line that has the given intercepts

4.  $x$ -intercepts: 3  
 $y$ -intercepts: 55.  $x$ -intercepts: -5  
 $y$ -intercepts: 66.  $x$ -intercepts: -2  
 $y$ -intercepts: noneFind the  $x$ -intercept and the  $y$ -intercept of the graph of the equation.

$$\frac{3x}{3} = \frac{9}{3}$$

$$x = 3$$

 $x$ -intercept = 3 $y$ -intercept = -3

$$7. 3x - 3y = 9$$

$$\frac{-3y}{-3} = \frac{9-3x}{-3}$$

$$y = -3 + x$$

 $y = -3$ 

$$\frac{4x}{4} = \frac{4}{4}$$

$$x = 1$$

 $x$ -intercept = 1 $y$ -intercept = 4

$$8. 4x + y = 4$$

$$y = 4 - 4x$$

$$y = 4$$

$$\frac{2x}{2} = \frac{24}{2}$$

$$x = 12$$

 $x$ -intercept = 12 $y$ -intercept = -3

$$9. 2x - 8y = 24$$

$$\frac{-8y}{-8} = \frac{24-2x}{-8}$$

$$y = -3 + \frac{x}{4}$$

 $y = -3$ 

## Match the equation with its graph.

$$10. 2x - 6y = 6$$

$$x\text{-int} = 3$$

$$y\text{-int} = -1$$

$$11. 2x - 6y = -6$$

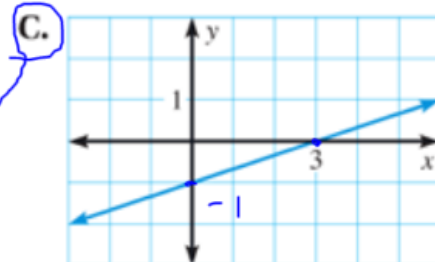
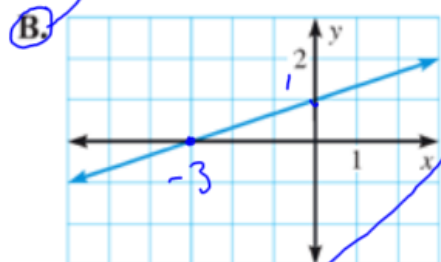
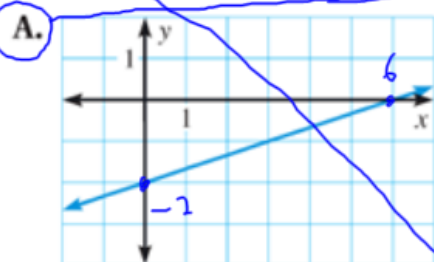
$$x\text{-int} = -3$$

$$y\text{-int} = 1$$

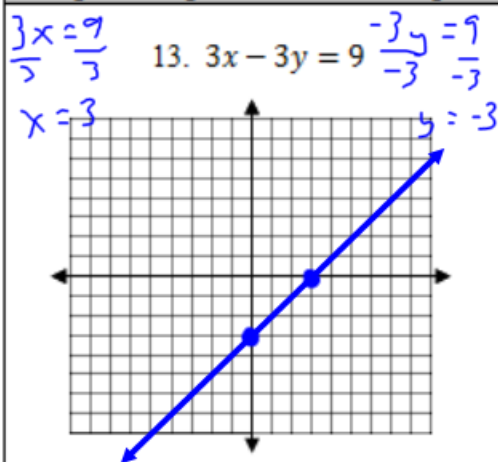
$$12. 2x - 6y = 12$$

$$x\text{-int} = 6$$

$$y\text{-int} = -2$$

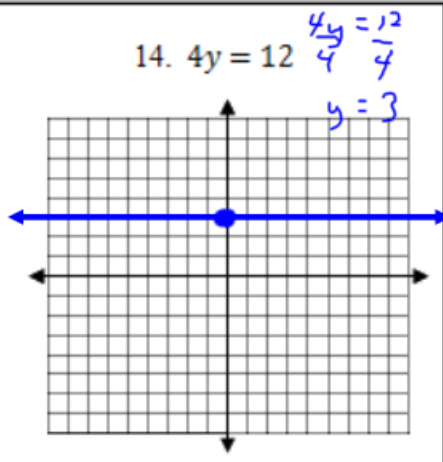


Graph the equation. Label the points where the line crosses the axes.



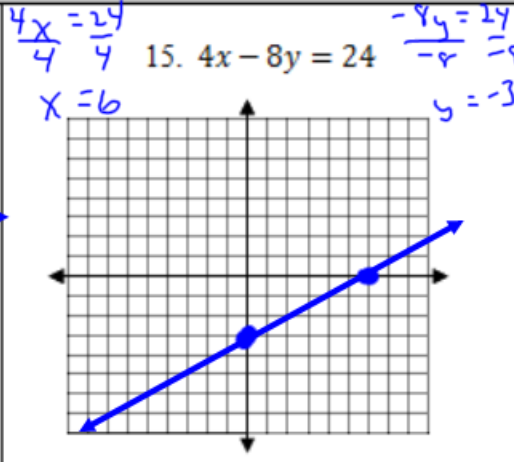
Is the point (12, 9) on the line?  
SHOW WORK!

Handwritten work:  
 $3(12) - 3(9) = 9$   
 $36 - 27 = 9$   
 $9 = 9$   
**YES!**



Is the point (-8, 34) a solution?  
SHOW WORK!

Handwritten work:  
 $4(34) = 12$   
 $136 = 12$   
**NO**



Is the point (10, -1/2) on the line?  
SHOW WORK!

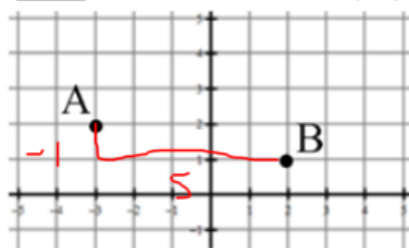
Handwritten work:  
 $4(10) - 8(-\frac{1}{2}) = 24$   
 $40 + 4 = 24$   
 $44 = 24$   
**NO**

SKILLZ REVIEW

GRAPH

1. Describe how to move from point A to point B.

Handwritten work:  
 -1 units in the y direction (rise)  
 5 units in the x direction (run)



SIMPLIFY

3.  $7(2x - 5) + 5$

Handwritten work:  
 $14x - 35 + 5$   
 $14x - 30$

4.  $4x - 5(3x - 1)$

SOLVE

5.  $7 - \frac{x}{4} = 17$

Handwritten work:  
 $-7$   
 $(-4) - \frac{x}{4} = 10(-4)$   
 $x = -40$

6.  $3x + 8 = 5x + 6$

For extra help, check the Skillz Review video!

2. Describe how to move from point C(0,3) to point D(2,-3).